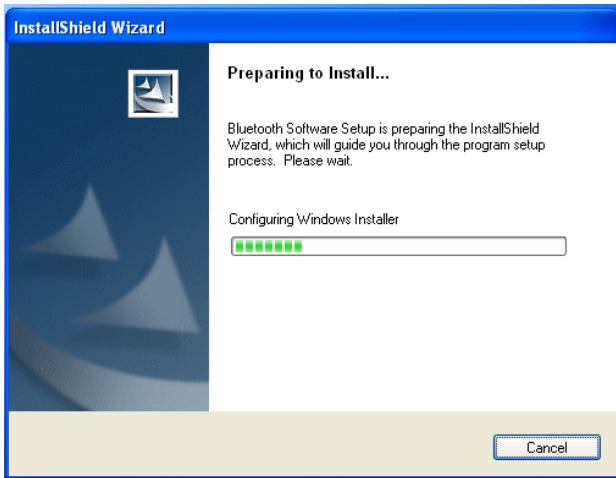
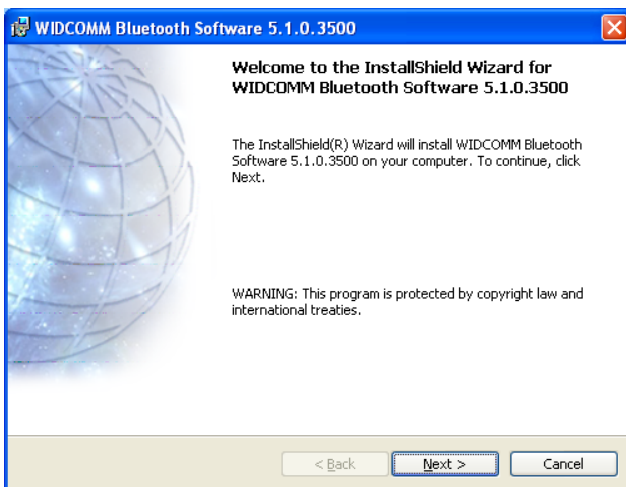


Airliner Installation Procedures

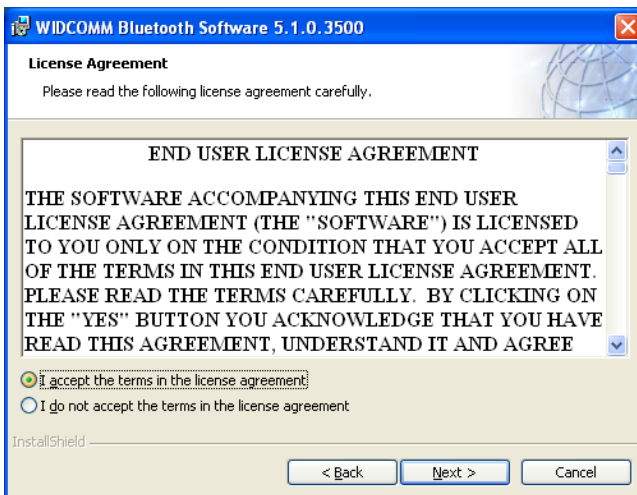
1. Place Blue Tooth CD into the CD player
2. The following message appears:



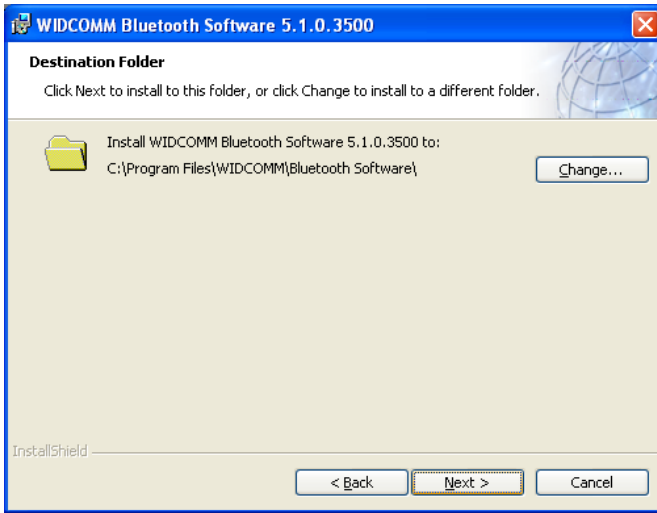
3. Click Next.



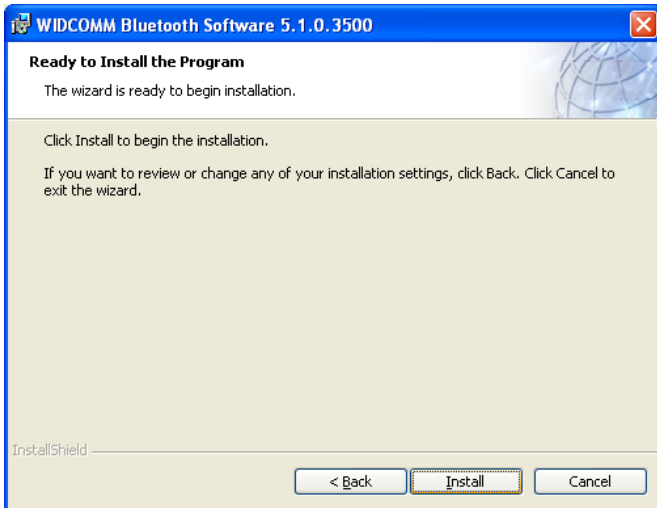
4. Click "I Accept" the terms. Click Next.



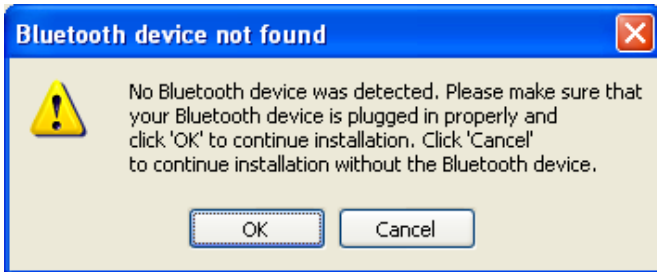
5. Click Next.



6. Click Install.



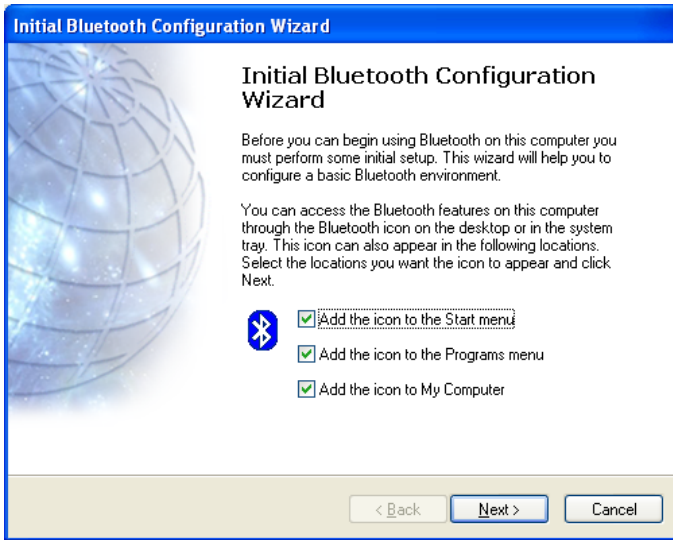
7. When this message appears, insert the USB Bluetooth Dongle into the USB Port



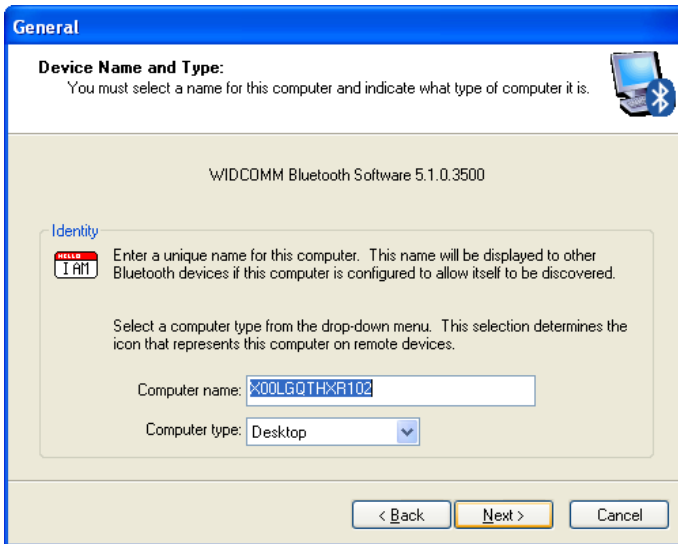
8. Click OK. This next portion of the installation will take several minutes.
9. Click Finish.



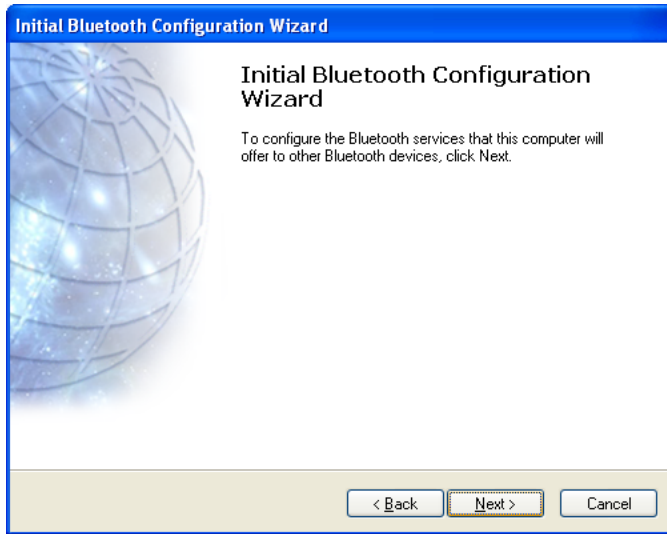
10. Uncheck the Items you wish not to occur. Click Next.



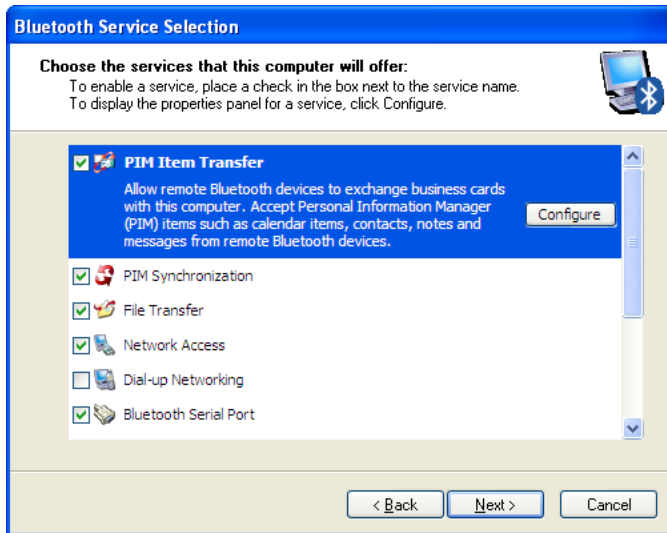
11. Click Next.



12. Click Next.



13. Click Next.



14. Click Skip.



15. Click Finish.

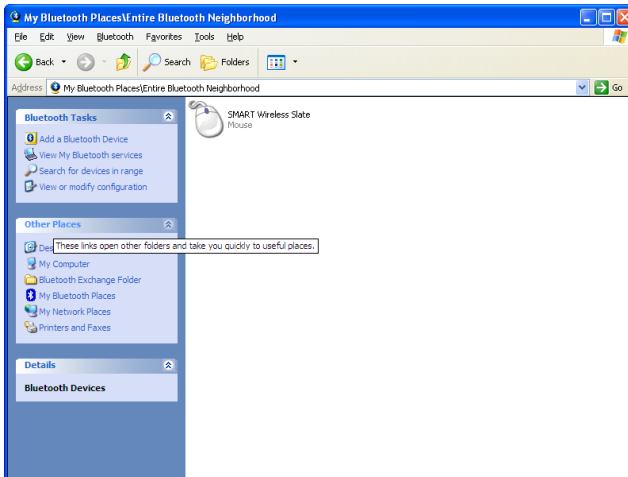


To activate your AirLiner for the Smart Board

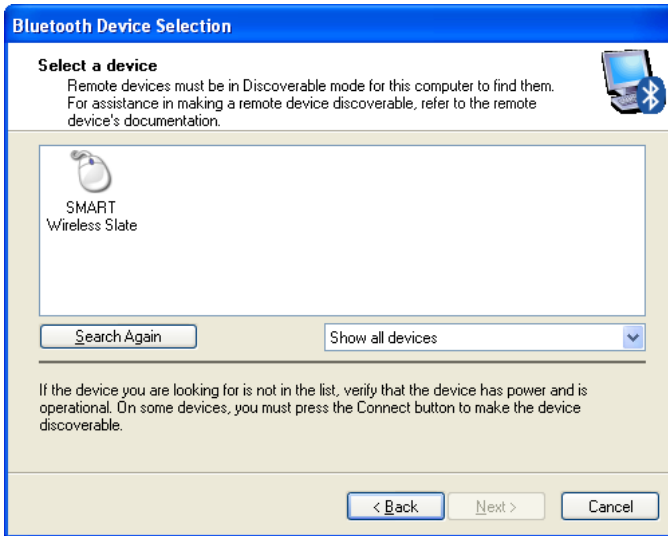
1. Click on the following icon on your desktop.



2. Click on the words "add a Bluetooth device"
3. Turn on your AirLiner. Click Next.



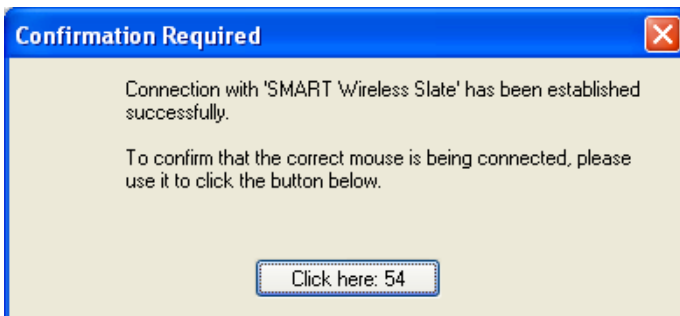
4. This shows the active BlueTooth Devices.



5. Select SMART Wireless Slate and click Next.



6. Press Click Here



7. Notice your Bluetooth Places icon shows the Airliner is active.

